



Laura  
Worthington

Beloved Script  
regular & bold  
User's Guide



FONT FAQ

#### HOW TO INSTALL YOUR FONT

You will receive your files as a zipped folder. For instructions on how to unzip your folder, visit [LauraWorthingtonType.com/faqs/](http://LauraWorthingtonType.com/faqs/).

Your font is available in two formats: TrueType Font file (.ttf) and OpenType Font file (.otf).

If you have a Mac® or newer Windows® computer, install the .otf file(s). If you have an older Windows computer, install the .ttf files. Install the font by double-clicking on the .ttf or .otf file. When the pop-up menu appears, click on Install font (Mac) or Install (Windows). Fonts may also be installed by dragging and dropping them into your system's font folder.

After installing your font, save a copy of the downloaded font files in a folder on your computer as a resource in case you want to re-install the font or transfer it to a new computer.

#### HOW TO INSERT SWASHES, ALTERNATES, AND ORNAMENTS

Some programs have a glyphs or symbol panel where the complete font including swashes and ornaments can be accessed and inserted directly. For programs that do not have a way to directly insert the swashes, the easiest method of putting in alternate swashes or symbols is by using either Character Map (Windows) or FontBook (Mac).

##### Character Map (Windows)

Character Map is a standard Windows utility and can be found in the Start Menu's accessories folder (Windows XP, Vista, 7) or in All Apps under Windows Accessories (Windows 8.1, 10). Character Map can also be found by searching for it by name.



---

Select your font from the drop-down menu. Character Map will show all available glyphs. To quickly find the swashes, change Group By to Unicode Subrange, and select Private Use Characters from the pop-up menu. Click on any swash and then copy and paste it into your document.

See the Character Map Video for a demonstration.

#### FontBook (Mac)

Font Book is a standard Mac utility program and can be found in Finder under the Go menu under Applications. Once FontBook is open, go to the View menu and select Repertoire. Click on User in the left panel and then select the font name to see all available swashes in the font. Click on any swash and then copy and paste it into your document.

See the Font Book Video for a demonstration.

#### LICENSING

Your font comes with a standard one-user license. This license covers one person with up to five workstations (laptop, desktop computer, etc.) connected to one printer or output device. For more

than one user and/or more than five workstations, please contact me at [help@lauraworthington.com](mailto:help@lauraworthington.com) for a multi-user license.

This font is available for both personal and commercial use. For details on licensing, please visit my FAQ page at [LauraWorthingtonType.com/faqs/](http://LauraWorthingtonType.com/faqs/).

#### FONT SUPPORT

Visit my FAQ page at [LauraWorthingtonType.com/faqs/](http://LauraWorthingtonType.com/faqs/) for information on licensing, installation, and both general and software specific questions.

Contact me at [help@lauraworthington.com](mailto:help@lauraworthington.com) and I will be happy to answer any questions.

---



Abuzz over Jazz and Glitz

BELOVED SCRIPT  
WITH BELOVED  
ORNAMENTS

L.M. 1897

Bluegrass & Juniper

hand poured  soy candles

Romeo & Juliet



Jams & Jellies \* Preserves  
needle & thread

# Beloved Script

*The hand of a romantic spirit,  
rendered in ballpoint*

*As befits its name, Beloved Script suggests the hand of a romantic spirit ... albeit one writing with a simple pen. Its monoline strokes evoke classic 20th-century penmanship achieved with a ballpoint or rounded nib.*

*Whereas many digital script typefaces impose simple "on or off" rules about character connections, Beloved Script embodies a more casual and natural state of handwriting —*

*the semi-connected script. These disconnections are apparent in the lower case t, and between rounded characters such as o and v, enabled by more than 40 ligatures.*

*Out of the box, Beloved Script is lively but casual. But with over 1000 swashes and alternates to choose from, including capitals, beginning, and ending forms, it can become a beautifully decorative spectacle, powerful for custom headlines and wordmarks. Includes regular and bold weights. Explore what Beloved Script can do for you.*

*Need even more typographic power? Pair it with its sans-serif companion face, BELOVED SANS.*

Hello

Greetings  
&

Salutations

*Beloved Script regular · bold*

*Font Specifications*

CHARACTERS:

3212 characters per weight

FONT FILES:

1 OpenType (.otf) file and 1 TrueType (.ttf) file

AVAILABLE:

[LauraWorthingtonType.com](http://LauraWorthingtonType.com)

OPENTYPE FAQ:

To access swashes, alternates, ornaments,  
and for any OpenType questions,  
go to [LauraWorthingtonType.com/faqs](http://LauraWorthingtonType.com/faqs)

ORIGINAL RELEASE:

August 2015



Heaps & Pounds

Two weights, Regular and Bold

A W L f z r K P S

Over 1,000 swashes and alternates

Date night at the Chocolaterie

Semi-connected which makes it more casual and natural (most people have semi-connected handwriting, fully connected is rare and I wanted this design to look as authentic as possible)

Th dz fy lt os pz gj tt

40 ligatures ensure smooth connections

sassafrass runner

Each letter has an alternate so that if there's a word with two of the same letters in it, one can be substituted which keeps the font looking natural

x x x x x x o r r r r r

Beginning and ending forms for additional polish (added since most letters are drawn/lettered differently at the end of a word than they are in the middle)





## Standard Characters

A B C D E F G H I J K L M

N O P Q R S T U V W X Y Z

a b c d e f g h i j k l m n o p q r s t u v w x y z

1 2 3 4 5 6 7 8 9 0 1/2 3/4

! " # \$ % & ' ( ) \* , - . / : ; < > ? @ [ \ ] ^ \_ { | } ~ ¡ « »

¡ — ‘ ’ , “ ” „ † • … ( ) ¢ £ ¥ € f

## OTHER CHARACTERS

ˆ ˘ ˙ ˚ ˛ ˜ ˝ ˞ ˠ ˡ ˢ ˣ ˤ ˥ ˦ ˧ ˨ ˩ ˪ ˫ ˬ ˭ ˮ ˯ ˰ ˱ ˲ ˳ ˴ ˵ ˶ ˷ ˸ ˹ ˺ ˻ ˼ ˽ ˾ ˿

# Basic & Extended Latin Characters

À Á Â Ã Ä Å Æ Ç È É

Ê Ë Ì Í Î Ï Ñ Ò Ó

Ô Õ Ö Ø Æ Œ Š Š Š Ţ Ţ

Ù Ú Û Ü Ý Þ ß

à á â ã ä å æ ç è é ê ë

ë ì í î ï ð ñ ò ó ô õ ö ø ù ú û ü ý þ ÿ

## Swashes / Alternates

- *Stylistic Alternates* b f g j k p r s y z
- *Ligatures (Standard / Discretionary)* Th dr ds dx dz fy jj lt or os ox  
oz pr ps px pz gj tr ts tt tx tz ur us vx vz wr ws wx wz yj zg zj zr zs zx zz
- *Initial Forms* r s x z   ■ *Medial Forms* x z
- *Terminal Forms* a b c d e h i j k l m n q r s u x y
- *Terminal Forms 2* a c d e h i k m n r u x
- *Contextual Alternates* d f g o p t u w z
- || *Uncategorized forms & ligatures (see Stylistic Sets)*



*Stylistic Sets*

A A A A A A A A A A A A  
SS01 SS02 SS03 SS04 SS05 SS06 SS07 SS08 SS09 SS10 SS11

A A A A A A A A A A A A  
SS12 SS13 SS14 SS15 SS16 SS17 SS18 SS19 SS20 SS21 SS22

a Ca Ca Ca Ca a a as as a a a  
SS01 SS02 SS03 SS04 SS05 SS06 SS07 SS08 SS50 FINA FIN2

B B B B B B B B B B  
SS01 SS02 SS03 SS04 SS05 SS06 SS07 SS08 SS09

- // UNCATEGORIZED
- STYLISTIC ALTERNATES (SALT)
- MEDIAL FORMS (MEDI)
- INITIAL FORMS (INIT)
- TERMINAL FORMS (FINA)
- TERMINAL FORMS 2 (FIN2)
- LIGATURES (LIGA)
- CONTEXTUAL ALTERNATES (CALT)

BELOVED SCRIPT · SWASHES/ALTERNATES



SS10 SS11 SS12 SS13



SS01 SS02 SS03 SS04 SS05 SS06 SS07 SS08 SS09 SS10



SS11 SS12 SS13 SS14 SS15 SS16 SS17 SS18 SS19 SS20



SS21 SS22 SS23 SS24 SS25 SS26 SS27 SS28 SS29 SS30



SS31 SS50 FINA SALT

// UNCATEGORIZED

■ STYLISTIC ALTERNATES (SALT)

■ MEDIAL FORMS (MEDI)

■ INITIAL FORMS (INIT)

■ TERMINAL FORMS (FINA)

■ TERMINAL FORMS 2 (FIN2)

■ LIGATURES (LIGA)

■ CONTEXTUAL ALTERNATES (CALT)

BELOVED SCRIPT · SWASHES/ALTERNATES

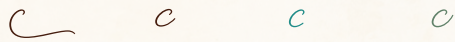
---



SS01 SS02 SS03 SS04 SS05 SS06



SS01 SS02 SS03 SS04 SS05 SS06 SS07 SS08



SS09 SS50 FINA FIN2



SS01 SS02 SS03 SS04 SS05 SS06 SS07 SS08



SS09 SS10 SS11 SS12

// UNCATEGORIZED

■ STYLISTIC ALTERNATES (SALT)

■ MEDIAL FORMS (MEDI)

■ INITIAL FORMS (INIT)

■ TERMINAL FORMS (FINA)

■ TERMINAL FORMS 2 (FIN2)

■ LIGATURES (LIGA)

■ CONTEXTUAL ALTERNATES (CALT)

BELOVED SCRIPT · SWASHES/ALTERNATES

*d* *d* *d* *d* *d* *d* *d* *d* *d* *d*  
 SS01 SS02 SS03 SS04 SS05 SS06 SS07 SS08 SS09

*d* *d* *d* *d* *d* *d* *d* *d* *d* *d*  
 SS10 SS11 SS12 SS13 SS14 SS15 SS16 SS17 SS18 SS19

*d* *d* *d* *d* *d* *d* *d* *d* *d* *d*  
 SS20 SS21 SS22 SS23 SS24 SS25 SS26 SS27 SS28 SS29

*Ed* *d* *d* *d* *dr* *ds* *dx* *dz*  
 SS30 CALT FINA FIN2 LIGA LIGA LIGA LIGA

*E* *E* *E* *E* *E* *E* *E* *E* *E* *E*  
 SS01 SS02 SS03 SS04 SS05 SS06 SS07 SS08 SS09 SS10

// UNCATEGORIZED      ■ STYLISTIC ALTERNATES (SALT)      ■ MEDIAL FORMS (MEDI)  
 ■ INITIAL FORMS (INIT)      ■ TERMINAL FORMS (FINA)      ■ TERMINAL FORMS 2 (FIN2)  
 ■ LIGATURES (LIGA)      ■ CONTEXTUAL ALTERNATES (CALT)

BELOVED SCRIPT · SWASHES/ALTERNATES

F F F F E E E

SS11 SS12 SS13 SS14 SS15 SS16 SS17

e Ce Ce e Ee e es es e

SS01 SS02 SS03 SS04 SS05 SS06 SS07 SS08

e e e e

SS09 SS50 FINA FIN2

F F F F F F F F F

SS01 SS02 SS03 SS04 SS05 SS06 SS07 SS08

f f f f f f f f f f

SS01 SS02 SS03 SS04 SS05 SS06 SS07 SS08 SS09 SS10

// UNCATEGORIZED

■ STYLISTIC ALTERNATES (SALT)

■ MEDIAL FORMS (MEDI)

■ INITIAL FORMS (INIT)

■ TERMINAL FORMS (FINA)

■ TERMINAL FORMS 2 (FIN2)

■ LIGATURES (LIGA)

■ CONTEXTUAL ALTERNATES (CALT)



BELOVED SCRIPT · SWASHES/ALTERNATES



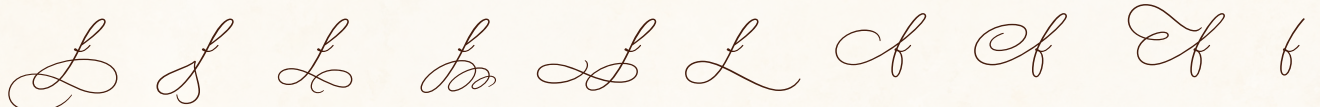
SS11 SS12 SS13 SS14 SS15 SS16 SS17 SS18 SS19 SS20



SS21 SS22 SS23 SS24 SS25 SS26 SS27 SS28 SS29 SS30



SS31 SS32 SS33 SS34 SS35 SS36 SS37 SS38 SS39 SS40



SS41 SS42 SS43 SS44 SS45 SS46 SS47 SS48 SS49 SS50



CALT SALT // SS51 SS52 SS53 SS54 SS55 SS56 SS57

- // UNCATEGORIZED
- STYLISTIC ALTERNATES (SALT)
- MEDIAL FORMS (MEDI)
- INITIAL FORMS (INIT)
- TERMINAL FORMS (FINA)
- TERMINAL FORMS 2 (FIN2)
- LIGATURES (LIGA)
- CONTEXTUAL ALTERNATES (CALT)

BELOVED SCRIPT · SWASHES/ALTERNATES



SS58 SS59 SS60 SS61 SS62 SS63 SS64 SS65 SS66 SS67



SS68 SS69 SS70 SS71 SS72 SS73 SS74 LIGA



SS01 SS02 SS03 SS04 SS05 SS06 SS07 SS08 SS09 SS10



SS11 SS12 SS13 SS14



SS01 SS02 SS03 SS04 SS05 SS06 SS07 SS08 SS09 SS10

// UNCATEGORIZED

■ STYLISTIC ALTERNATES (SALT)

■ MEDIAL FORMS (MEDI)

■ INITIAL FORMS (INIT)

■ TERMINAL FORMS (FINA)

■ TERMINAL FORMS 2 (FIN2)

■ LIGATURES (LIGA)

■ CONTEXTUAL ALTERNATES (CALT)

BELOVED SCRIPT · SWASHES/ALTERNATES



SS11 SS12 SS13 SS14 SS15 SS16 SS17 SS18 SS19 SS20



SS21 SS22 SS23 SS24 SS25 SS26 SS27 CALT SALT //



// // // //



SS01 SS02 SS03 SS04 SS05 SS06 SS07 SS08 SS09 SS10



SS11 SS12 SS13 SS14 SS15 SS16 SS17 SS18 SS19 SS20

- // UNCATEGORIZED      ■ STYLISTIC ALTERNATES (SALT)      ■ MEDIAL FORMS (MEDI)  
■ INITIAL FORMS (INIT)      ■ TERMINAL FORMS (FINA)      ■ TERMINAL FORMS 2 (FIN2)  
■ LIGATURES (LIGA)      ■ CONTEXTUAL ALTERNATES (CALT)

BELOVED SCRIPT · SWASHES/ALTERNATES

H H H H H

SS21 SS22 SS23 SS24 SS25

h h h h h h h h h h h

SS01 SS02 SS03 SS04 SS05 SS06 SS07 SS08 SS09 SS10

h h h h h h h h h h

SS11 SS12 SS13 SS14 SS15 SS16 SS17 SS18 SS19 SS20

h h h h h h h h h h

SS21 SS22 SS23 SS24 SS25 SS26 SS27 SS28 SS29 SS30

h h h h h h h h

SS31 SS32 SS33 SS34 SS35 SS50 FINA FIN2

// UNCATEGORIZED

■ STYLISTIC ALTERNATES (SALT)

■ MEDIAL FORMS (MEDI)

■ INITIAL FORMS (INIT)

■ TERMINAL FORMS (FINA)

■ TERMINAL FORMS 2 (FIN2)

■ LIGATURES (LIGA)

■ CONTEXTUAL ALTERNATES (CALT)

BELOVED SCRIPT · SWASHES/ALTERNATES

*I* *I* *I* *I* *I* *I* *I* *I* *I*

SS01 SS02 SS03 SS04 SS05 SS06 SS07 SS08

*i* *ci* *ci* *ci* *ci* *o* *o* *is* *is* *i* *i*

SS01 SS02 SS03 SS04 SS05 SS06 SS07 SS08 SS09 SS10

*i* *i* *i* *i* *i* *i* *i* *i*

SS11 SS12 SS13 SS14 SS15 SS50 FINA FIN2

*L* *L* *L* *L* *L* *L* *L* *L* *L* *L* *L*

SS01 SS02 SS03 SS04 SS05 SS06 SS07 SS08 SS09 SS10

*L* *L* *L* *L* *L* *L* *L* *L*

SS11 SS12 SS13 SS14 SS15 SS16 SS17 SS18

// UNCATEGORIZED

■ STYLISTIC ALTERNATES (SALT)

■ MEDIAL FORMS (MEDI)

■ INITIAL FORMS (INIT)

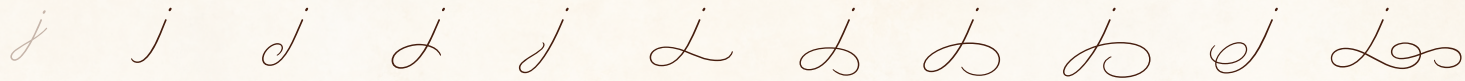
■ TERMINAL FORMS (FINA)

■ TERMINAL FORMS 2 (FIN2)

■ LIGATURES (LIGA)

■ CONTEXTUAL ALTERNATES (CALT)

BELOVED SCRIPT · SWASHES/ALTERNATES



SS01 SS02 SS03 SS04 SS05 SS06 SS07 SS08 SS09 SS10



SS11 SS12 SS13 SS14 SS15 SS16 SS17 SS18 SS19 SS20



SS21 SS22 SS23 SS24 SS25 SS26 SS27



SS50 FINA SALT LIGA



SS01 SS02 SS03 SS04 SS05 SS06 SS07 SS08 SS09 SS10

// UNCATEGORIZED

■ STYLISTIC ALTERNATES (SALT)

■ MEDIAL FORMS (MEDI)

■ INITIAL FORMS (INIT)

■ TERMINAL FORMS (FINA)

■ TERMINAL FORMS 2 (FIN2)

■ LIGATURES (LIGA)

■ CONTEXTUAL ALTERNATES (CALT)

BELOVED SCRIPT · SWASHES/ALTERNATES

*K K K K K K K K K*  
SS11 SS12 SS13 SS14 SS15 SS16 SS17 SS18 SS19

*k k k k k k k k k k*  
SS01 SS02 SS03 SS04 SS05 SS06 SS07 SS08 SS09 SS10

*k k k k k k k k k k*  
SS11 SS12 SS13 SS14 SS15 SS16 SS17 SS18 SS19 SS20

*k k k k k k k k k k*  
SS21 SS22 SS23 SS24 SS25 SS26 SS27 SS28 SS29 SS30

*Ek k k k k k k*  
SS31 SS32 SS33 SS34 SS35 FINA FIN2 SALT

// UNCATEGORIZED

■ STYLISTIC ALTERNATES (SALT)

■ MEDIAL FORMS (MEDI)

■ INITIAL FORMS (INIT)

■ TERMINAL FORMS (FINA)

■ TERMINAL FORMS 2 (FIN2)

■ LIGATURES (LIGA)

■ CONTEXTUAL ALTERNATES (CALT)

BELOVED SCRIPT · SWASHES/ALTERNATES

SS01 SS02 SS03 SS04 SS05 SS06 SS07 SS08 SS09 SS10

SS11 SS12 SS13 SS14 SS15

SS01 SS02 SS03 SS04 SS05 SS06 SS07 SS08 SS09 SS10

SS11 SS12 SS13 SS14 SS15 SS16 SS17 SS18 SS19 SS20

SS21 SS22 SS23 SS24 SS25 SS26 SS27 SS28 SS29 SS30

// UNCATEGORIZED

■ STYLISTIC ALTERNATES (SALT)

■ MEDIAL FORMS (MEDI)

■ INITIAL FORMS (INIT)

■ TERMINAL FORMS (FINA)

■ TERMINAL FORMS 2 (FIN2)

■ LIGATURES (LIGA)

■ CONTEXTUAL ALTERNATES (CALT)



BELOVED SCRIPT · SWASHES/ALTERNATES

---

*El* *l* *l* *l* *l* *l* *l* *l* *lt*  
SS31 SS32 SS33 SS34 SS35 SS50 FINA // LIGA

---

*M* *M* *M* *M* *M* *M* *M* *M* *M* *M*  
SS01 SS02 SS03 SS04 SS05 SS06 SS07 SS08 SS09

---

*M* *M* *M* *M* *M* *M*  
SS10 SS11 SS12 SS13 SS14 SS15

---

*m* *m* *m* *m* *m* *m* *m* *m* *m* *m*  
SS01 SS02 SS03 SS04 SS05 SS06 SS07 SS08 SS09

---

*m* *m* *m* *m* *m* *m* *m* *m* *m*  
SS10 SS11 SS12 SS13 SS14 SS15 SS50 FINA FIN2

---

- // UNCATEGORIZED      ■ STYLISTIC ALTERNATES (SALT)      ■ MEDIAL FORMS (MEDI)  
■ INITIAL FORMS (INIT)      ■ TERMINAL FORMS (FINA)      ■ TERMINAL FORMS 2 (FIN2)  
■ LIGATURES (LIGA)      ■ CONTEXTUAL ALTERNATES (CALT)
-

BELOVED SCRIPT · SWASHES/ALTERNATES

N N N N N N N N N N

SS01 SS02 SS03 SS04 SS05 SS06 SS07 SS08 SS09

EN EN EN N N N N N N

SS10 SS11 SS12 SS13 SS14 SS15 SS16 SS17 SS18

n cn cn cn En n n n n n n

SS01 SS02 SS03 SS04 SS05 SS06 SS07 SS08 SS09 SS10

n n n n n n n n

SS11 SS12 SS13 SS14 SS15 SS50 FINA FIN2

O O O O O O O O

SS01 SS02 SS03 SS04 SS05 SS06 SS07 SS08

// UNCATEGORIZED

■ STYLISTIC ALTERNATES (SALT)

■ MEDIAL FORMS (MEDI)

■ INITIAL FORMS (INIT)

■ TERMINAL FORMS (FINA)

■ TERMINAL FORMS 2 (FIN2)

■ LIGATURES (LIGA)

■ CONTEXTUAL ALTERNATES (CALT)

BELOVED SCRIPT · SWASHES/ALTERNATES

o e s es Co Co Co To o o  
 SS01 SS02 SS03 SS04 SS05 SS06 SS07 SS08 SS09

es es e or os ox oz  
 SS10 SS11 CALT LIGA LIGA LIGA LIGA

P P P P P p P P P  
 SS01 SS02 SS03 SS04 SS05 SS06 SS07 SS08


p p p p p L L L L p p L  
 SS01 SS02 SS03 SS04 SS05 SS06 SS07 SS08 SS09 SS10

L L L L p L L L L p  
 SS11 SS12 SS13 SS14 SS15 SS16 SS17 SS18 SS19 SS20

// UNCATEGORIZED      ■ STYLISTIC ALTERNATES (SALT)      ■ MEDIAL FORMS (MEDI)  
 ■ INITIAL FORMS (INIT)      ■ TERMINAL FORMS (FINA)      ■ TERMINAL FORMS 2 (FIN2)  
 ■ LIGATURES (LIGA)      ■ CONTEXTUAL ALTERNATES (CALT)

BELOVED SCRIPT · SWASHES/ALTERNATES

  
SS21 SS22 SS23 SS24 SS25 SS26 SS27 SS28 SS29

  
CALT SALT LIGA LIGA LIGA LIGA

  
SS01 SS02 SS03 SS04 SS05 SS06 SS07 SS08

  
SS01 SS02 SS03 SS04 SS05 SS06 SS07 SS08 SS09

  
SS10 SS50 FINA LIGA

// UNCATEGORIZED      ■ STYLISTIC ALTERNATES (SALT)      ■ MEDIAL FORMS (MEDI)  
■ INITIAL FORMS (INIT)      ■ TERMINAL FORMS (FINA)      ■ TERMINAL FORMS 2 (FIN2)  
■ LIGATURES (LIGA)      ■ CONTEXTUAL ALTERNATES (CALT)

BELOVED SCRIPT · SWASHES/ALTERNATES

R R R R R R R R R R R

SS01 SS02 SS03 SS04 SS05 SS06 SS07 SS08 SS09 SS10

R R R R R

SS11 SS12 SS13 SS14 SS15

r Cr Cr r Er r r r r r r

SS01 SS02 SS03 SS04 SS05 SS06 SS07 SS08 SS09 SS10

r r r r r r r r r r

SS11 SS12 SS13 SS14 SS15 SS50 INIT FINA FIN2 SALT

S S S S S S S S S S

SS01 SS02 SS03 SS04 SS05 SS06 SS07 SS08 SS09 SS10

// UNCATEGORIZED

■ STYLISTIC ALTERNATES (SALT)

■ MEDIAL FORMS (MEDI)

■ INITIAL FORMS (INIT)

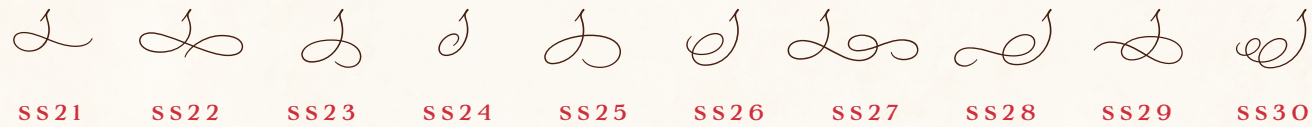
■ TERMINAL FORMS (FINA)

■ TERMINAL FORMS 2 (FIN2)

■ LIGATURES (LIGA)

■ CONTEXTUAL ALTERNATES (CALT)

BELOVED SCRIPT · SWASHES/ALTERNATES



// UNCATEGORIZED

■ STYLISTIC ALTERNATES (SALT)

■ MEDIAL FORMS (MEDI)

■ INITIAL FORMS (INIT)

■ TERMINAL FORMS (FINA)

■ TERMINAL FORMS 2 (FIN2)

■ LIGATURES (LIGA)

■ CONTEXTUAL ALTERNATES (CALT)

BELOVED SCRIPT · SWASHES/ALTERNATES

*T* *T* *T* *T* *T* *T* *T* *T* *T*

SS01 SS02 SS03 SS04 SS05 SS06 SS07 SS08

*T* *T* *Th*

SS09 SS10 LIGA

*t* *t* *t* *t* *t* *t* *t* *t* *t*

SS01 SS02 SS03 SS04 SS05 SS06 SS07 SS08 SS09

*t* *t* *t* *t* *t* *t* *t* *t* *t*

SS10 SS11 SS12 SS13 SS14 SS15 SS16 SS17 SS18

*t* *tr* *ts* *tt* *tx* *tz*

CALT LIGA LIGA LIGA LIGA LIGA

// UNCATEGORIZED

■ STYLISTIC ALTERNATES (SALT)

■ MEDIAL FORMS (MEDI)

■ INITIAL FORMS (INIT)

■ TERMINAL FORMS (FINA)

■ TERMINAL FORMS 2 (FIN2)

■ LIGATURES (LIGA)

■ CONTEXTUAL ALTERNATES (CALT)

BELOVED SCRIPT · SWASHES/ALTERNATES

---

U U U U U U U U

SS01 SS02 SS03 SS04 SS05 SS06 SS07

U U U

SS08 SS09 SS10

---

u cu cu cu cu u u

SS01 SS02 SS03 SS04 SS05 SS06 SS07

u u u u

SS08 SS50 FINA FIN2

---

V V V V V V V V V V

SS01 SS02 SS03 SS04 SS05 SS06 SS07 SS08 SS09

// UNCATEGORIZED

■ STYLISTIC ALTERNATES (SALT)

■ MEDIAL FORMS (MEDI)

■ INITIAL FORMS (INIT)

■ TERMINAL FORMS (FINA)

■ TERMINAL FORMS 2 (FIN2)

■ LIGATURES (LIGA)

■ CONTEXTUAL ALTERNATES (CALT)

---



BELOVED SCRIPT · SWASHES/ALTERNATES

*v v v*

SS10 SS11 SS12

*ux uz*

LIGA LIGA

*v cv cv cv cv d d d d u ur us*

SS01 SS02 SS03 SS04 SS05 SS06 SS07 SS08 CALT LIGA LIGA

*W W W W W W W W W W W W*

SS01 SS02 SS03 SS04 SS05 SS06 SS07 SS08 SS09 SS10 SS11

*w cw cw cw cw d d d d*

SS01 SS02 SS03 SS04 SS05 SS06 SS07 SS08

*w ur us ux uz*

CALT LIGA LIGA LIGA LIGA

// UNCATEGORIZED

■ STYLISTIC ALTERNATES (SALT)

■ MEDIAL FORMS (MEDI)

■ INITIAL FORMS (INIT)

■ TERMINAL FORMS (FINA)

■ TERMINAL FORMS 2 (FIN2)

■ LIGATURES (LIGA)

■ CONTEXTUAL ALTERNATES (CALT)

BELOVED SCRIPT · SWASHES/ALTERNATES

---



SS01 SS02 SS03 SS04 SS05 SS06



SS07 SS08 SS09 SS10 SS11

---



SS01 SS02 SS03 SS04 SS05 SS06 SS07 SS08 SS09



SS10 SS11 SS12 SS13 SS14 SS15 SS16 SS17 SS18



SS50 INIT MEDI FINA FIN2

---

// UNCATEGORIZED

■ STYLISTIC ALTERNATES (SALT)

■ MEDIAL FORMS (MEDI)

■ INITIAL FORMS (INIT)

■ TERMINAL FORMS (FINA)

■ TERMINAL FORMS 2 (FIN2)

■ LIGATURES (LIGA)

■ CONTEXTUAL ALTERNATES (CALT)

---

BELOVED SCRIPT · SWASHES/ALTERNATES

Y Y Y Y Y Y Y Y Y

SS01 SS02 SS03 SS04 SS05 SS06 SS07 SS08

Y Y Y Y Y Y Y

SS09 SS10 SS11 SS12 SS13 SS14 SS15

y y y y y y y y y

SS01 SS02 SS03 SS04 SS05 SS06 SS07 SS08

y y y y y y y y

SS09 SS10 SS11 SS12 SS13 SS14 SS15 SS16

y y y y y y y cy

SS17 SS18 SS19 SS20 SS21 SS22 SS23 SS24

// UNCATEGORIZED

■ STYLISTIC ALTERNATES (SALT)

■ MEDIAL FORMS (MEDI)

■ INITIAL FORMS (INIT)

■ TERMINAL FORMS (FINA)

■ TERMINAL FORMS 2 (FIN2)

■ LIGATURES (LIGA)

■ CONTEXTUAL ALTERNATES (CALT)

BELOVED SCRIPT · SWASHES/ALTERNATES

*Cy* *Ty* *Ey* *y* *y* *y* *yj*  
SS25 SS26 SS27 SS50 FINA SALT LIGA

*Z* *Z* *Z* *Z* *Z* *Z* *Z* *Z* *Z*  
SS01 SS02 SS03 SS04 SS05 SS06 SS07 SS08

*Z* *Z* *Z* *Z* *Z* *Z* *Z* *Z* *Z*  
SS09 SS10 SS11 SS12 SS13 SS14 SS15 SS16 SS17

*z* *z* *z* *z* *z* *z* *z* *z* *z*  
SS01 SS02 SS03 SS04 SS05 SS06 SS07 SS08

*z* *z* *z* *z* *z* *z* *z* *z* *z*  
SS09 SS10 SS11 SS12 SS13 SS14 SS15 SS16 SS17

// UNCATEGORIZED      ■ STYLISTIC ALTERNATES (SALT)      ■ MEDIAL FORMS (MEDI)  
■ INITIAL FORMS (INIT)      ■ TERMINAL FORMS (FINA)      ■ TERMINAL FORMS 2 (FIN2)  
■ LIGATURES (LIGA)      ■ CONTEXTUAL ALTERNATES (CALT)

BELOVED SCRIPT · SWASHES/ALTERNATES



SS18 SS19 SS20 SS21 SS22 SS23 SS24 SS25 SS26



SS27 INIT MEDI CALT SALT // // // //



// // // // // // // //

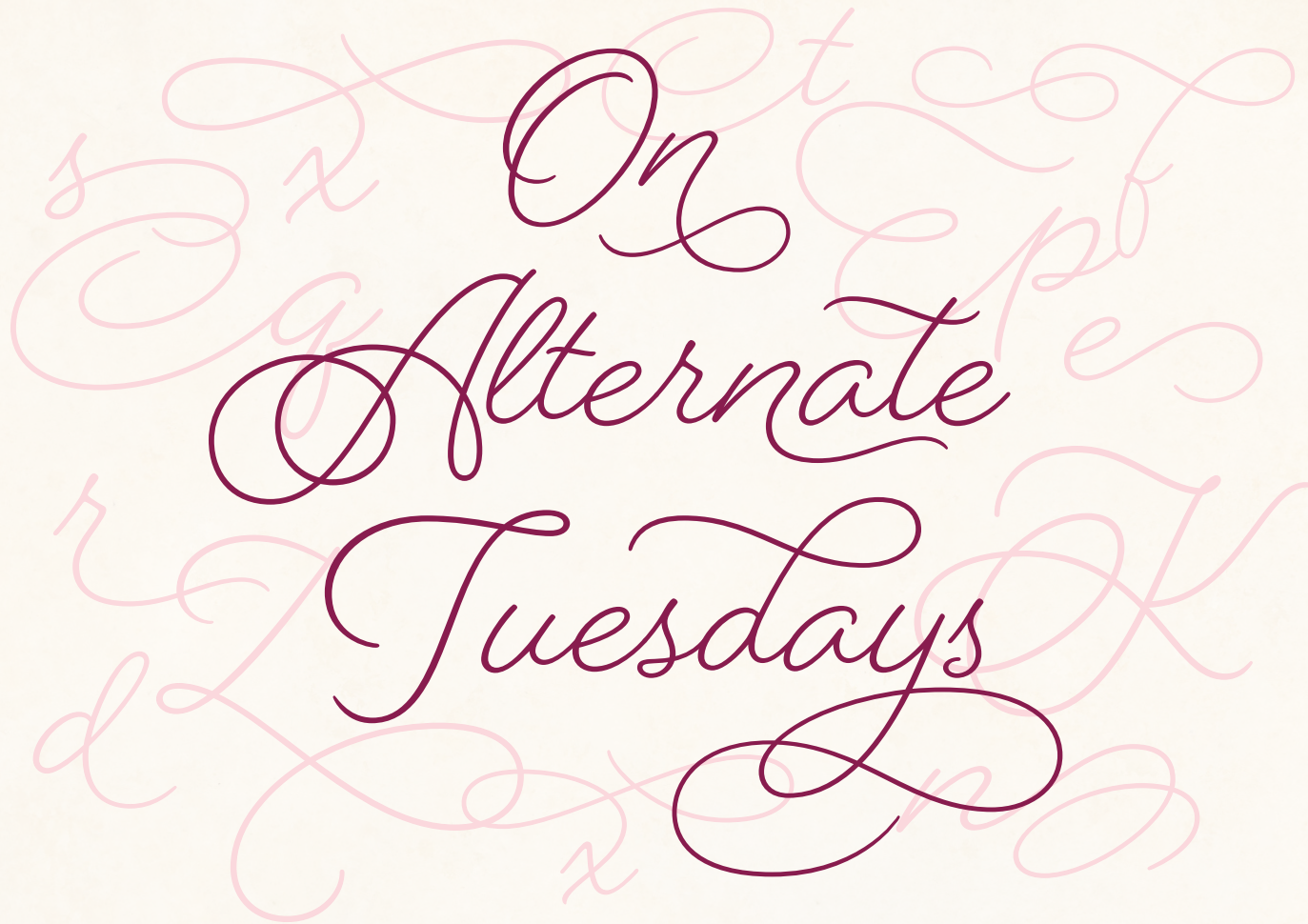


// // // // // //



// // //

- // UNCATEGORIZED
- STYLISTIC ALTERNATES (SALT)
- MEDIAL FORMS (MEDI)
- INITIAL FORMS (INIT)
- TERMINAL FORMS (FINA)
- TERMINAL FORMS 2 (FIN2)
- LIGATURES (LIGA)
- CONTEXTUAL ALTERNATES (CALT)



VARIOUS SWASHES & ALTERNATES

Dearly Beloved Dearly Beloved

Dearly Beloved Dearly Beloved

Dearly Beloved Dearly Beloved

Dearly Beloved Dearly Beloved

VARIOUS SWASHES & ALTERNATES

---



xo Elizabeth

STANDARD CHARACTERS

xo Elizabeth

SWASHES & ALTERNATES

■ SS17   ■ SS07   ■ SS08   ■ SS18

■ CONTEXTUAL ALTERNATES (CALT)   ■ SS18   ■ MEDIAL FORMS (MEDI)



CONTEXTUAL ALTERNATES

*a bronze patina develops with age*

1. STANDARD CHARACTERS

---

*a bronze patina develops with age*

2. WITH CONTEXTUAL ALTERNATES SETTING ENABLED

---

*a bronze patina develops with age*

3. (WITH ADDITIONAL TERMINAL FORMS AND ALTERNATES)

---

■ STYLISTIC ALTERNATES (SALT)

■ CONTEXTUAL ALTERNATES (CALT)

■ SS50

■ TERMINAL FORMS (FINA)

■ TERMINAL FORMS 2 (FIN2)

LIGATURES

Thousands of Letters  
from Leipzig

STANDARD CHARACTERS

---

Thousands of Letters  
from Leipzig

LIGATURES SETTING ENABLED

---

■ LIGATURES (LIGA)

OR MUSCATELLA  
NEW YORK · LOS ANGELES · MILAN

BELOVED  
SCRIPT &  
BELOVED SANS  
& BELOVED  
ORNAMENTS

*Frosty Peaks*  
- ICE CREAM -

---

*Scoops of the Day!*

---

SALTED CARAMEL *lllee*

*→* KAFIR LIME LEAF

CHILI CHOCOLATE *🌀*

*WILD HORSES*  
*Couldn't drag me away*